

EAP®

ABUTMENTS



**REPRODUCING
THE GENIUS OF NATURE.
TOGETHER.**



WWW.EAP-ABUTMENTS.COM

”EAP® is a hybrid abutment for dental implants with higher biocompatibility, better cell attachment, enhanced ease of use, high aesthetic appeal – which is scientifically documented and suitable for subsequent modifications.“



*Prof. Ing. Dr. Mario Kern M.Sc. M.Sc.
Owner and Chairman of the Managing Board*



Electron-micrograph at 200-fold magnification.
Due to the lack of biocompatibility, cells attach to the titanium adhesive base. The glue line is a limiting factor.

EAP®

INTERNATIONAL AWARDS

THE SMALLEST REVOLUTION IN THE WORLD
WINS PRIZES AND AWARDS.



2017 GERMAN MEDICAL AWARD®

The jury's decision is focused on science, innovation and patient benefits. The numerous nominations across all medical fields are evaluated by a scientific advisory committee.



THE PRIZE THAT MAKES INNOVATION VISIBLE

The German Innovation Awards honour products and solutions that distinguish themselves primarily by their user centricity and added value compared to earlier solutions across all industrial sectors.



reddot award 2019
honourable mention

UNIQUE PRODUCT DESIGN

Excellent design is awarded by renowned expert juries in the areas of product design, communication design and design concepts. Red Dot Award: Design Concept recognises the need to identify new design concepts, innovations and product excellence.

EAP® MADE EASY

DESIGN YOUR INDIVIDUAL TITANIUM ABUTMENT WITH YOUR OWN SOFTWARE AND SEND IT TO US AS AN STL FILE. WE WILL DELIVER YOUR INDIVIDUALIZED EAP® HYBRID ABUTMENT.



STL FILE



EAP® HYBRID ABUTMENT

HOW TO GET EAP® HYBRID ABUTMENTS

Simply send us a patient-specific titanium abutment as an STL-file – generated with your software – via our online portal (www.ea-platform.com/shop). You will receive our EAP® abutment including the outer shell and the screw channel, with the height, angle and shape according to your design. EAP® made easy.

Soon our CAD-library for 3shape will be available in our download area free of charge.

WE ALWAYS DELIVER OUR **EAP®** HYBRID ABUTMENTS INDIVIDUALLY FOR EACH PATIENT AND YELLOW ANODIZED.

COMPATIBLE IMPLANT SYSTEMS**

All systems available with angled screw channel up to 20° (except * up to 15°). As of September 2021.

Manufacturer	Implant system *	
Bego®	Semados® 4.1 4.5 5.5 & unlocked	
BioHorizons®	External & unlocked	coming soon
BioHorizons®	Internal & unlocked	
Biomet 3i®	Certain™ 3.4 4.1 5.0 6.0 & unlocked	
Biomet 3i®	Osseotite™ & unlocked	
Bredent®	Sky® 3.5 4.0 & unlocked	
Camlog® *	Screw Root Line 3.3 3.8 4.3 5.0 6.0 & unlocked	
Camlog®	Conelog® & unlocked	coming 2022
Dentium®	Superline & unlocked	coming 2022
Dentsply® Implants	Ankylos	coming soon
Dentsply® Implants	Astratech® Osseospeed EV™ & unlocked	
Dentsply® Implants	Astratech® Osseospeed TX™ & unlocked	coming soon
Dentsply® Implants	Xive® 3.0 3.4 3.8 4.5 5.5 & unlocked	
Medentika®	Microcone 3.0 3.5/5.0 & unlocked	
Medentika®	Procone 3.3 3.8 4.3 5.0 6.0 & unlocked	
Medentis® Medical	ICX 3.45 3.75 4.1 4.8 & ICX PLUS & unlocked	
Megagen®	Anyridge & unlocked	coming soon
MIS®	Seven & unlocked	
Nobel Biocare™	Active™ 3.0 3.5 4.3 5.0 & unlocked	
Nobel Biocare™	Brånemark® NP 3.5 RP 4.1 WP 5.1 & unlocked	
Nobel Biocare™	Replace™ Connical Connection 3.0 3.5 4.3 5.0 & unlocked	
Nobel Biocare™	Replace™ Select 3.5 4.3 5.0 6.0 & unlocked	
Osstem® Implant	TS & unlocked	coming soon
Straumann®	Bone Level NC RC & unlocked	
Straumann®	Tissue Level RN WN & unlocked	
Straumann®	BLX	coming 2022
Zimmer® *	Screw-Vent™ 3.5 4.5 5.7 & unlocked	

**If you cannot find your preferred implant system on our list, please do not hesitate to contact us. We are happy to assist you. We constantly strive to expand our systems. Errors and omissions excepted. ® and TM are registered trademarks of the respective implant manufacturers.












ADVANTAGES FOR DENTAL TECHNICIANS

- ✓ Flexible time management to complete your technical work with best practice. Save time.
- ✓ No time-consuming reworking. The surface is perfectly defined by us.
- ✓ No ADD-ON firing on the crown margins is needed as the ceramic is behind the titanium.
- ✓ No changes to your usual way of working.
- ✓ No new software is required.
- ✓ No need to buy new equipment for processing. You are independent of the material and the manufacturing method.
- ✓ Our unique **EAP®** feather edge allows for perfect gluing, offering maximum biocompatibility.
- ✓ Subsequent modifications can be carried out quickly and easily without additional costs. You will always get a perfect aesthetic result.
- ✓ Gingival height is no longer an issue.

Perfect cooperation between dental technician and dentist is achieved. Your work is made easier and you achieve a safe and highly aesthetic result together.



ADVANTAGES FOR DENTISTS

-  Massive time savings as the impression for completing your technical works can be made directly after implantation.
-  Red-white aesthetics can be controlled quickly and easily with the one-step approach of exposing and integrating the abutment and the crown.
-  No time-consuming shaping of the emergence profile.
-  The glue line is at its maximum distance from the bone. The risk of a pseudo pocket is reduced to a minimum.
-  No changes to your usual way of working. You can handle our **EAP®** hybrid abutment like an individual titanium abutment.
-  No new software is required.
-  No new equipment for processing required.
-  Our unique **EAP®** feather edge allows for perfect gluing, almost eliminating the adhesive's cytotoxic influence.
-  Subsequent modifications can be carried out quickly and easily. This reduces the stress at the treatment chair, allowing you to correct without additional costs. You will always get a perfect aesthetic result.

**ACHIEVING
SUCCESS TOGETHER**

ABUTMENT COMPARISON

Comparison chart

System components Abutment by comparison****	Titanium	Zircon	PEEK	NEM	Hybrid abutment	Hybrid abutment PEEK	EAP® hybrid abutment
Studies	15	4	2	12	8	1	15**
Aesthetics	13 / 15*	15	14	15	15	14	13 / 15*
Variability	15	4	3	15	15	10	15
Long-term stability	15	4	2	15	12	6	15***
Material characteristics	15	12	13	15	15	14	15
Biocompatibility	15	15	15	6	9	15	15
Emergence profile handling	6	6	6	6	13	13	15
Emergence profile time exposure	6	6	6	6	12	9	15
Working method	15	12	6	15	12	9	15
Subsequent modification	0	0	0	0	0	0	15
Mechanical stability	15	12	12	15	9	13	15
Material independency	15	12	6	15	15	6	15
Overall view (MV)	12 / 12.25	8.5	7.1	11.3	11.3	9.5	14.8 / 15

*Anodized or coated with titanium nitride / **Systemic like titanium / ***Feather edge / ****Gold standard titanium

©Prof. Ing. Dr. Mario Kern M.Sc. M.Sc. This comparison of systems is to be seen free from value. The weighting of the individual points depends on personal preferences. A detailed list can be found under www.ea-platform.at (as of March 2019).

Legend

Parameters to be assessed****	green	yellow	red	Decision parameters
Studies	≥ 50	≥ 20	≤ 10	Number of studies in particular 5 and more years
Aesthetics	invisible	recognizable	visible	In case of thin gingiva type, visibility of abutment
Variability	yes	possible	no	Abutment possibilities, explanation, mechanical load in boarder area
Long-term stability	≥ 10	≤ 10	≤ 5	In years
Material characteristics	stable	prone to fracture	high risk of fracture	Impact sensitivity, influence of impulse, elastic modulus, reworking
Biocompatibility	yes	limited	no	Glue line, cell attachment and plaque attachment
Emergence profile handling	easy	medium	difficult	Experience for red-white aesthetics
Emergence profile time exposure	days	more than 2 weeks	more than 3 weeks	Gingiva shaper, imprints, restoration
Working method	no	partly	yes	Working like with titanium abutment, material handling
Subsequent modification	yes	–	no	Subsequent change, analog change digital vice versa
Mechanical stability	yes	limited	no	Stability of the system, implant and abutment
Material independency	yes	limited	no	Possibilities of material choice

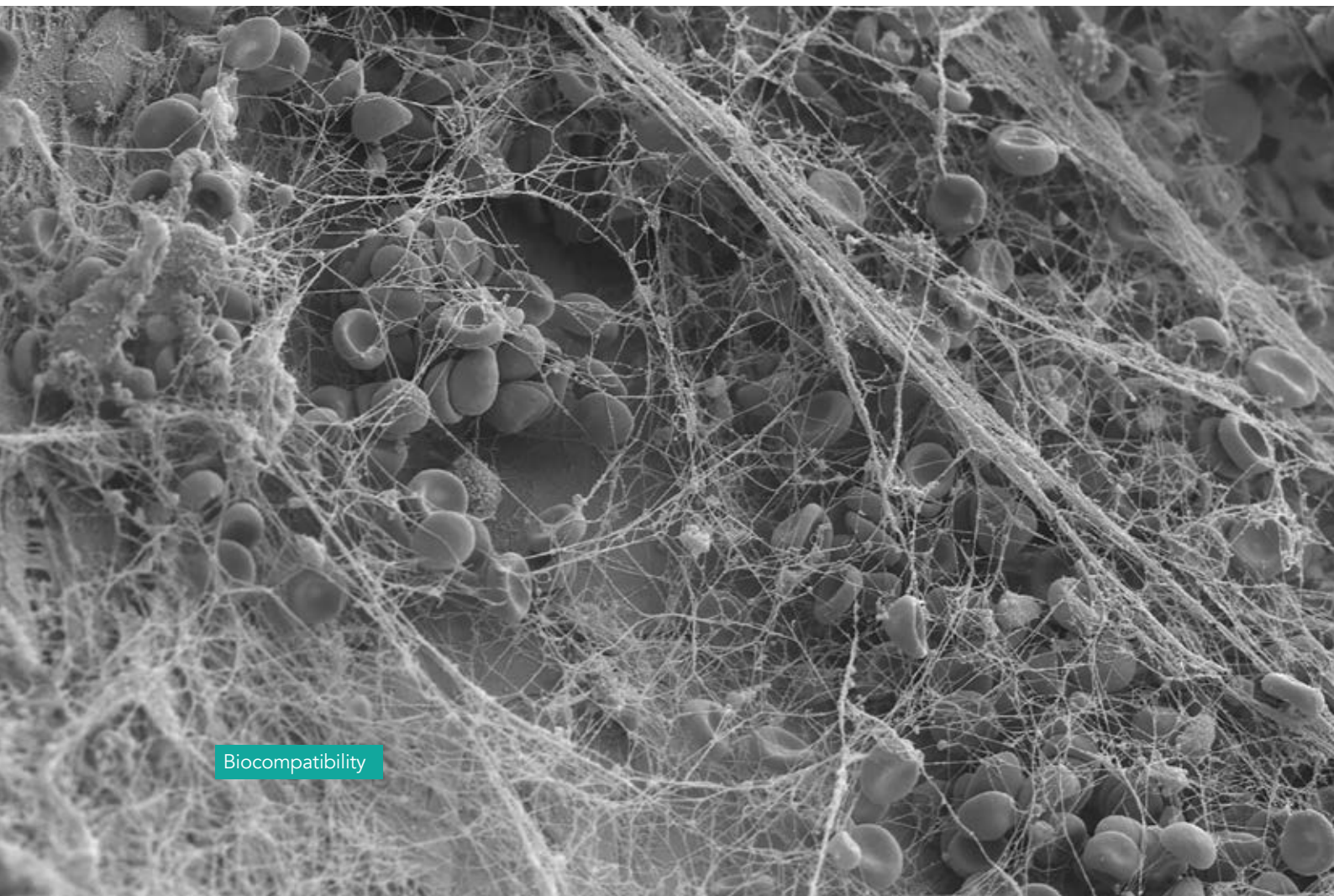
Grading system

15	14 – 13	12 – 10	09 – 07	06 – 05	04 – 00
excellent	very good	good	satisfactory	sufficient	insufficient



SCIENTIFICALLY DOCUMENTED

Cell behavior was scientifically documented in a **prospective human study** and illustrated with more than **160 electron-micrographs**.



Biocompatibility



Cell attachment

EAP® COMBINES THE AESTHETIC APPEAL OF A HYBRID ABUTMENT WITH THE BIOCOMPATIBILITY OF A TITANIUM ABUTMENT



EAP® Produktions- und Patentverwertungs- GmbH
Lorettostraße 26
6060 Hall in Tirol
Austria

COMMERCIAL REGISTER: FN 483289w
VAT: AT U72852709
REGISTER COURT: Landesgericht Innsbruck

PHONE: +43 (0) 5223 - 25200
EMAIL: office@eap-abutments.com
WEB: www.eap-abutments.com



Legal Notice:

Editor and responsible for the content: Prof. Ing. Dr. Mario Kern M.Sc. M.Sc., Owner and CEO

The contents of this folder are intellectual property of the author and shall not be reproduced or made available to third parties without the prior consent of the author. Subject to printing errors, changes and errors. ® and TM are registered trademarks of the respective companies.